

The Great Oak  
CE Learning  
Federation



Autumn Term  
2025  
Friday 28<sup>th</sup>  
November 2025

# Betley CE Primary School

'With Wisdom, Respect and Love we Flourish and Shine'

## Our Vision

"You are the light of the world. A town built on a hill cannot be hidden. Neither do people light a lamp and put it under a bowl. Instead, they put it on its stand, and it gives light to everyone in the house. In the same way, let your light shine before others, that they may see your good deeds and glorify your Father in heaven." (Matthew 5:14-16)

### Severe Weather Conditions

If we are to close due to snow we will do three things:

- We will text all of our parents
- Put a notice on our school website
- Inform the local authority that will add the school to their list of closures.

Please follow the link by clicking on the link below.

We will always do our best to remain open - if we do close it will be for Health and Safety reasons.

[School Closure List](#)

### Achievements outside of school

If your child takes part in an activity whether it be sports, helping animals or volunteering and you would like to celebrate this, please email me on: [office@betley.staffs.sch.uk](mailto:office@betley.staffs.sch.uk) Well done to all of the children below for their achievements outside of school:

Swimming- Josh and Tom

Ballet-Maya

Football- Seb

Horse Riding- Amelia

Cubs- Harry

### Golden Table

This is for children who show amazing manners and behaviour at lunchtime. They will sit at a table on Tuesday that is covered in golden mats, cutlery, etc! They are chosen by our fabulous lunchtime supervisors and kitchen staff. This week the children are: Junior, Orla, Micah, Artie, Eliza, Cosmo, Bobby & Alexis.

### Numbots and TTRS:

Sammy, George, Elias and Evalyn.



### Star of the Week

Marvellous Minibeasts	Maisie & Juniper
Fabulous Flamingos	Toby & Topsy
Perfect Penguins	Persephone & Santiago
Cheeky Chimps	Marloe, Tessa, Niko & Bobby

### Christian Value Certificate

Marvellous Minibeasts	Miles
Fabulous Flamingos	Tommy
Perfect Penguins	Alba
Cheeky Chimps	Pippa

### Attendance

Marvellous Minibeasts	93%
Fabulous Flamingos	97%
Perfect Penguins	94%
Cheeky Chimps	97.5%

**British Values**



**Mutual Respect and Tolerance**

The Princess of Wales' carol service brings people together to share kindness and joy. When we show care, we help create togetherness. Respecting people of all ages, backgrounds, and beliefs helps our communities feel welcoming and connected.

**In the news this week**

On Friday, the Princess of Wales will host her annual carol service, which will bring people together to celebrate kindness, connection, and community. The event aims to show how love can link people of all ages, backgrounds, and beliefs, especially at times when the world can feel divided. It encourages everyone to think about the power of togetherness and the importance of supporting one another with compassion and joy.

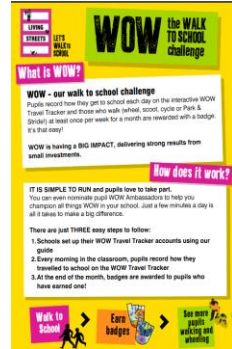
**Things to talk about at home ...**

- Talk to someone at home – are they interested in this concert? Do you or they believe it will achieve its aim in bringing people together?
- Are there any services, concerts, or events that you will be attending during the festive period?
- Talk about what 'togetherness' means to you and your people at home.

Each week in Worship on Thursday we explore British Values. Next week the focus is: **Mutual Respect and Tolerance**

**Climate Action and Sustainability**

Park and Strides Point:  
Cricket Club  
Village Hall  
The Swan



**FOBS**

The next meeting will be the on 20<sup>th</sup> January 2025 at The Swan starting at 7pm.

- 05/12/25- Wreath Making
- 08/12/25- EYFS and KS1 Tea with Santa
- 10/12/25-KS2 Christmas bingo extravaganza

**Class Dojo**

Write a poem about the meaning of Christmas.  
Please return your task by Thursday 4th December to receive 20 Dojos.  
All tasks will be displayed in the Collective Worship Areas.

1228	1010
910	1039

<p><b>Saturday 29<sup>th</sup> November 2025</b> Christmas Fayre</p>	<p><b>Monday 1<sup>st</sup> December 2025</b> Christmas Tree Service – St Margaret’s Church 2pm</p>	<p><b>Tuesday 2<sup>nd</sup> December 2025</b> Fabulous Flamingos - Englesea Brook Museum 10:00-11:45am</p>
--	---	---

**Musician of the month**

Next week we will be listening to:

[George Frideric-Libertango](#)

About: George Frideric Handel was a German-born Baroque composer who became a naturalized British citizen. Renowned for his operas, oratorios, anthems, and instrumental compositions, Handel’s music remains some of the most enduring in Western classical tradition. His works, such as Messiah, Water Music, and Music for the Royal Fireworks, showcase his mastery of dramatic expression and melodic invention. Handel’s influence helped shape the development of both

orchestral and vocal music during the 18th century and beyond.

Genres: Baroque, Classical, Sacred & Orchestral

Active from: 1702 – 1759

Origin: Halle, Germany (later London, England)

[Musician of the month](#)

### **Our School Prayer**

*Let our school be full of love and respect for one another,  
Let us have the wisdom to understand our place and flourish as part of God's creation  
But the courage to make the world a better place  
With the help of your love may we shine  
Amen*

### **Collective Worship Focus**

This week our focus will be discovering how we connect with God as part of the Sacred Pathway- perseverance.

### **Snacks**

Children order snacks on a Monday for the week. If your child is absent on Monday they will be able to order on their return to school.

<b>Snacks</b>	
Toast	38p
Toast with Jam	44p
Toast with Cheese	49p
Bagel	38p
Crumpet	38p
Toasted Teacake	49p
Pancakes	49p
Flavoured Milkshakes	82p

### **Lunches**

**Please note: The price of school dinners will be increasing to £3.20 from 1<sup>st</sup> April 2025**

To go alongside the daily menu below, there is also Hot Tomato Pasta, Jacket Potatoes with Baked Beans/Cheese and a variety of sandwiches every day.

**Monday:** Margherita Pizza with Jacket Wedges

Vegetarian option – Rainbow Pizza with Jacket Wedges

**Tuesday:** Italian Sausage Pasta Bake

Vegetarian option – Penne with Garden Bolognese

**Wednesday:** Roast of the Day with Yorkshire, Roasties & Gravy

Vegetarian option – Vegan Fillet, Roasties & Gravy

**Thursday:** Cottage Pie

Vegetarian option – Golden Topped Cottage Pie

**Friday:** Fish Fingers with Chips

Vegetarian option – Vegetable Fingers with Chips

## Important Dates

<b>Saturday 29<sup>th</sup> November 2025</b>	Christmas Fayre
<b>Monday 1<sup>st</sup> December 2025</b>	Christmas Tree Service – St Margaret’s Church 2pm
<b>Tuesday 2<sup>nd</sup> December 2025</b>	Fabulous Flamingos-Englesea Brook Museum 10:00-11:45am
<b>Tuesday 2<sup>nd</sup> December 2025</b>	Year 5-Newcastle College (All Day)
<b>Friday 5<sup>th</sup> December 2025</b>	FOBS- Wreath Making Workshop 6:30pm-8:30pm
<b>Sunday 7<sup>th</sup> December 2025</b>	Christingle Service at St. Margaret’s Church – 4:30pm
<b>Monday 8<sup>th</sup> December 2025</b>	FOBS- EYFS & KS1 Tea with Santa 3:30pm-5pm
<b>Tuesday 9<sup>th</sup> December 2025</b>	Year 6- Newcastle College (All Day)
<b>Tuesday 9<sup>th</sup> December 2025</b>	EYFS/KS1 Nativity – St Margaret’s Church 5pm
<b>Wednesday 10<sup>th</sup> December 2025</b>	FOBS- KS2 Christmas Bingo Extravaganza 3:30pm- 5pm
<b>Wednesday 10<sup>th</sup> December 2025</b>	EYFS/KS1 Nativity – St Margaret’s Church 1:30pm
<b>Tuesday 16<sup>th</sup> December 2025</b>	KS2 Drama Club Nativity – St Margaret’s Church 5pm
<b>Wednesday 17<sup>th</sup> December 2025</b>	KS2 Drama Club Nativity – St Margaret’s Church 1:30pm
<b>Friday 19<sup>th</sup> December 2025</b>	INSET DAY
<b>Monday 22<sup>nd</sup> December 2025 – Friday 2<sup>nd</sup> January 2026</b>	School Closed – Christmas Break
<b>Tuesday 20<sup>th</sup> January 2026</b>	FOBS 7pm
<b>Monday 26<sup>th</sup> January 2026</b>	Class 4 - Stockport Air Raid Shelter Trip
<b>Thursday 5<sup>th</sup> February 2026</b>	Young Voices - Manchester CO-OP Arena
<b>Wednesday 11<sup>th</sup> February 2026</b>	Cheeky Chimps Class Assembly & Cake Sale 9:15am
<b>Monday 16<sup>th</sup> February 2026 – Friday 20<sup>th</sup> February 2026</b>	School Closed – Half Term
<b>Monday 23<sup>rd</sup> February 2026</b>	Parental Meetings ‘Go Live’ Date
<b>Thursday 5<sup>th</sup> March 2026</b>	World Book Day Celebrations
<b>Monday 9<sup>th</sup> March 2026</b>	Class 2 – Ford Green Hall Trip
<b>Wednesday 11<sup>th</sup> March 2026</b>	Class 1 Trip – Hoo Zoo
<b>Thursday 12<sup>th</sup> March 2026</b>	Mother’s Day Crafts
<b>Monday 16<sup>th</sup> March 2026</b>	Parental Meetings 4pm – 7pm
<b>Wednesday 18<sup>th</sup> March 2026</b>	Perfect Penguins Class Assembly & Cake Sale 9:15am
<b>Wednesday 18<sup>th</sup> March 2026</b>	Parental Meetings 3:30pm – 6:30pm

<b>Friday 20<sup>th</sup> March 2026</b>	Odd Sock Day – World Down Syndrome Day (no donation required)
<b>Tuesday 24<sup>th</sup> March 2026</b>	Easter Service at St Margaret’s Church 2pm
<b>Wednesday 25<sup>th</sup> March 2026</b>	Class 3 – Wroxeter Trip
<b>Monday 30<sup>th</sup> March 2026 – Friday 10<sup>th</sup> April 2026</b>	School Closed – Easter Break
<b>Wednesday 22<sup>nd</sup> April 2026</b>	Fabulous Flamingos Class Assembly & Cake Sale 9:15am
<b>Wednesday 29<sup>th</sup> April 2026</b>	Marvellous Minibeasts Class Assembly & Cake Sale 9:15am
<b>Friday 1<sup>st</sup> May 2026</b>	Academy Photos – Class Photos & Y6 Leavers
<b>Wednesday 6<sup>th</sup> May 2026</b>	Whole School Water Safety Assembly 1pm
<b>Thursday 7<sup>th</sup> May 2026</b>	Perfect Penguins Rivers Workshop 1pm
<b>Monday 11<sup>th</sup> May 2026</b>	SATS
<b>Monday 25<sup>th</sup> May 2026 – Friday 29<sup>th</sup> May 2026</b>	School Closed – Half Term
<b>Monday 1<sup>st</sup> June 2026</b>	INSET DAY
<b>Tuesday 2<sup>nd</sup> June 2026 – Friday 5<sup>th</sup> June 2026</b>	KS2 Residential – St Briavels Castle
<b>Wednesday 17<sup>th</sup> June 2026</b>	Sports Day – Betley CC 1:15pm
<b>Thursday 18<sup>th</sup> June 2026</b>	Father’s Day Crafts
<b>Thursday 2<sup>rd</sup> July 2026</b>	Celebration Carnival 2pm
<b>Friday 3<sup>rd</sup> July 2026</b>	Summer Fayre
<b>Wednesday 8<sup>th</sup> July 2026</b>	KS2 Leavers Performance 1:30pm & 5:30pm
<b>Thursday 9<sup>th</sup> July 2026</b>	Prom & Disco 6pm – 8pm
<b>Friday 10<sup>th</sup> July 2026</b>	School Reports to Parents
<b>Friday 17<sup>th</sup> July 2026</b>	Leavers Assembly – St Margaret’s Church 9:15am
<b>Monday 20<sup>th</sup> July 2026</b>	INSET DAY
<b>Tuesday 21<sup>st</sup> July 2026</b>	School Closed – Summer Break