

The Great Oak
CE Learning
Federation



Autumn Term
2025
Friday 14th
November 2025

Betley CE Primary School

'With Wisdom, Respect and Love we Flourish and Shine'

Our Vision

"You are the light of the world. A town built on a hill cannot be hidden. Neither do people light a lamp and put it under a bowl. Instead, they put it on its stand, and it gives light to everyone in the house. In the same way, let your light shine before others, that they may see your good deeds and glorify your Father in heaven." (Matthew 5:14-16)

Remembrance Service

A heartfelt thank you to all the children and their families who attended the Remembrance Service on Sunday at St Margaret's Church. It was wonderful to see so many children taking part. Listening to their readings was truly heartwarming, and it was lovely to see how much their confidence has grown since last year.

As a whole school, we also gathered in the memorial garden on Tuesday for the village Remembrance Service. The children showed great respect and a real sense of belonging within the community – it was endearing to witness.

Parental Meetings

It has been wonderful to share information about the children's learning with you during this week's parent meetings. If you were unable to attend, please contact your child's class teacher, who will be more than happy to arrange a meeting at a time convenient for you.

Betley Bonfire

A big thank you to all the families and staff who supported the school by volunteering their time at the Betley Bonfire. Your time, effort, and enthusiasm are very much appreciated. It was wonderful to see our school community coming together to help make the event such a success.

FOBS Christmas Markets

We are delighted to invite all our families to the annual FOBS Christmas Markets on Saturday 29th November. It promises to be a wonderful festive event filled with fun, music, and community spirit!

Our children will be performing a selection of their Nativity songs on the day:

Perfect Penguins (African Drumming with Mr. Will): 11:45 a.m.

EYFS & KS1: 12:00 p.m.

KS2: 12:15 p.m.

If your child is able to take part, please let Mrs. Cooper know.

We look forward to seeing everyone there and celebrating the start of the festive season together!



Star of the Week

| | |
|-----------------------|--------------------|
| Marvellous Minibeasts | Isaac & Molly-Rose |
| Fabulous Flamingos | Mabel & Forest |
| Perfect Penguins | Jack & Harry |
| Cheeky Chimps | Sylvie & Maya |

Christian Value Certificate

| | |
|-----------------------|--------|
| Marvellous Minibeasts | Finley |
| Fabulous Flamingos | Oliver |
| Perfect Penguins | Alfie |
| Cheeky Chimps | Bertie |

Attendance

| | |
|-----------------------|-------|
| Marvellous Minibeasts | 97% |
| Fabulous Flamingos | 97.6% |
| Perfect Penguins | 99% |
| Cheeky Chimps | 96.8% |

Anti-Bullying Week

During Anti-Bullying Week, each class took part in a BBC interactive lesson, where the children completed challenges focused on being positive upstanders.

The children also designed their own badges to help spread awareness of Anti-Bullying Week and the important message it represents.



In addition, every class took part in a PSHE lesson exploring how our school can continue to prevent bullying. The children discussed who they can turn to if they ever feel uncomfortable, both in and out of school, and learned about the importance of supporting and standing up for their friends.

Interfaith Week – “Kindness Grows Here”

As part of Interfaith Week, the children took part in a whole-school activity focused on the theme of kindness. Each child wrote or drew an act of kindness they had done or received on a leaf-shaped card. These leaves will be added to our Kindness Tree display in the school hall, titled “Kindness Grows Here.”

Throughout the week, the children also explored how kindness is encouraged across different faiths. Around the school, quotes and teachings about kindness from a range of religions will be displayed, helping everyone to reflect on the shared values that unite us.

As a follow-up activity, each class chose one of these quotes to inspire their own creative work. The children produced wonderful artwork, poetry, posters, and digital slideshows that celebrated kindness and the importance of treating others with respect and compassion.

Achievements outside of school

If your child takes part in an activity whether it be sports, helping animals or volunteering and you would like to celebrate this, please email me on: office@betley.staffs.sch.uk Well done to all of the children below for their achievements outside of school:

Swimming- Evalyn

Golden Table

This is for children who show amazing manners and behaviour at lunchtime. They will sit at a table on Tuesday that is covered in golden mats, cutlery, etc! They are chosen by our fabulous lunchtime supervisors and kitchen staff. This week the children are: Arthur, Aria, Evalyn, Forest, Charlie, Amelia, Tessa & Jess.

Numbots and TTRS: Grace, Huey, Charlie & Jacob

British Values



Democracy

New technology, such as Nike's Project Amplify, can lead people to voice many different opinions. Democracy reminds us to share our views respectfully and listen to the voices of others.

In the news this week

Nike has revealed a new type of powered shoe, called Project Amplify, which uses small motors to boost a person's walking and running movement. The shoes are designed to reduce tiredness and make everyday movement easier, especially for those who need extra support. Nike says the aim is to help people stay active, independent and mobile in their daily lives.

Things to talk about at home ...

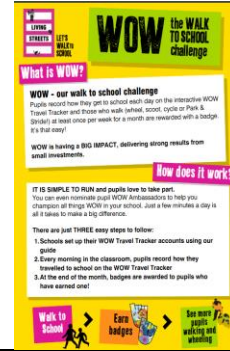
- Explain and share your thoughts with someone at home about the new shoe design.
- Do you believe everyone should be allowed to use the same technology, or should some things be only for people who really need them?
- Can you think of other technologies designed to make life easier? Which do you use?

Each week in Worship on Thursday we explore British Values. Next week the focus is:

Democracy

Climate Action and Sustainability

Park and Strides Point:
Cricket Club
Village Hall
The Swan



FOBS

The next meeting will be the on 20th January 2025 at The Swan starting at 7pm.

- 21/11/25- Non Uniform- Bottle or Bar
- 29/11/25- Christmas Fayre 11am-1pm
- 05/12/25- Wreath Making
- 08/12/25- EYFS and KS1 Tea with Santa
- 10/12/25-KS2 Christmas bingo extravaganza

Class Dojo

Draw a picture about kindness in faith.
Please return your task by Thursday 20th November to receive 20 Dojos.
All tasks will be displayed in the Collective Worship Areas.

| | |
|-----|-----|
| 887 | 914 |
| 582 | 699 |

Thursday 20th November 2025
Year 3-Newcastle College
9:30-12:30

Friday 21st November 2025
Non-Uniform Bottle or Bar

Thursday 27th November 2025
Year 4- Newcastle College
9:30-12:30

Musician of the month

Next week we will be listening to:

[George Frideric-Hallelujah Chorus](#)

About: George Frideric Handel was a German-born Baroque composer who became a naturalized British citizen. Renowned for his operas, oratorios, anthems, and instrumental compositions, Handel’s music remains some of the most enduring in Western classical tradition. His works, such as Messiah, Water Music, and Music for the Royal Fireworks, showcase his mastery of dramatic expression and melodic invention. Handel’s influence helped shape the development of both orchestral and vocal music during the 18th century and beyond.

Genres: Baroque, Classical, Sacred & Orchestral

Active from: 1702 – 1759

Origin: Halle, Germany (later London, England)

[Musician of the month](#)

Our School Prayer

*Let our school be full of love and respect for one another,
Let us have the wisdom to understand our place and flourish as part of God’s creation*

*But the courage to make the world a better place
With the help of your love may we shine
Amen*

Collective Worship Focus

This week our focus will be discovering how we connect with God as part of the Sacred Pathway- perseverance.

Snacks

Children order snacks on a Monday for the week. If your child is absent on Monday they will be able to order on their return to school.

| Snacks | |
|----------------------|-----|
| Toast | 38p |
| Toast with Jam | 44p |
| Toast with Cheese | 49p |
| Bagel | 38p |
| Crumpet | 38p |
| Toasted Teacake | 49p |
| Pancakes | 49p |
| Flavoured Milkshakes | 82p |

Lunches

Please note: The price of school dinners will be increasing to £3.20 from 1st April 2025

To go alongside the daily menu below, there is also Hot Tomato Pasta, Jacket Potatoes with Baked Beans/Cheese and a variety of sandwiches every day.

Monday: Margherita Pizza with Jacket Wedges

Vegetarian option – Rainbow Pizza with Jacket Wedges

Tuesday: Sausage with Mash & Gravy

Vegetarian option – Veggie Sausage with Mash & Gravy

Wednesday: Roast of the Day with Yorkshire, Roasties & Gravy

Vegetarian option – Vegan Fillet, Roasties & Gravy

Thursday: Penne with Beef Bolognese

Vegetarian option – Sweet Potato Korma with Rice

Friday: Fish Fingers with Chips

Vegetarian option – Vegetable Fingers with Chips

Important Dates

| | |
|---|--|
| Thursday 20th November 2025 | Year 3-Newcastle College 9:30-12:30 |
| Friday 21st November 2025 | Non-Uniform Bottle or Bar |
| Thursday 27th November 2025 | Year 4- Newcastle College 9:30-12:30 |
| Saturday 29th November 2025 | Christmas Fayre |
| Monday 1st December 2025 | Christmas Tree Service – St Margaret's Church 2pm |

| | |
|--|--|
| Tuesday 2nd December 2025 | Fabulous Flamingos-Englesea Brook Museum 10:00-11:45am |
| Tuesday 2nd December 2025 | Year 5-Newcastle College (All Day) |
| Friday 5th December 2025 | FOBS- Wreath Making Workshop 6:30pm-8:30pm |
| Sunday 7th December 2025 | Christingle Service at St. Margaret's Church – 4:30pm |
| Monday 8th December 2025 | FOBS- EYFS & KS1 Tea with Santa 3:30pm-5pm |
| Tuesday 9th December 2025 | Year 6- Newcastle College (All Day) |
| Tuesday 9th December 2025 | EYFS/KS1 Nativity – St Margaret's Church 5pm |
| Wednesday 10th December 2025 | FOBS- KS2 Christmas Bingo Extravaganza 3:30pm- 5pm |
| Wednesday 10th December 2025 | EYFS/KS1 Nativity – St Margaret's Church 1:30pm |
| Tuesday 16th December 2025 | KS2 Drama Club Nativity – St Margaret's Church 5pm |
| Wednesday 17th December 2025 | KS2 Drama Club Nativity – St Margaret's Church 1:30pm |
| Friday 19th December 2025 | INSET DAY |
| Monday 22nd December 2025 – Friday 2nd January 2026 | School Closed – Christmas Break |
| Tuesday 20th January 2026 | FOBS 7pm |
| Monday 26th January 2026 | Class 4 - Stockport Air Raid Shelter Trip |
| Thursday 5th February 2026 | Young Voices - Manchester CO-OP Arena |
| Wednesday 11th February 2026 | Cheeky Chimps Class Assembly & Cake Sale 9:15am |
| Monday 16th February 2026 – Friday 20th February 2026 | School Closed – Half Term |
| Monday 23rd February 2026 | Parental Meetings 'Go Live' Date |
| Thursday 5th March 2026 | World Book Day Celebrations |
| Monday 9th March 2026 | Class 2 – Ford Green Hall Trip |
| Wednesday 11th March 2026 | Class 1 Trip – Hoo Zoo |
| Thursday 12th March 2026 | Mother's Day Crafts |
| Monday 16th March 2026 | Parental Meetings 4pm – 7pm |
| Wednesday 18th March 2026 | Perfect Penguins Class Assembly & Cake Sale 9:15am |
| Wednesday 18th March 2026 | Parental Meetings 3:30pm – 6:30pm |
| Friday 20th March 2026 | Odd Sock Day – World Down Syndrome Day (no donation required) |
| Tuesday 24th March 2026 | Easter Service at St Margaret's Church 2pm |
| Wednesday 25th March 2026 | Class 3 – Wroxeter Trip |

| | |
|--|---|
| Monday 30th March 2026 – Friday 10th April 2026 | School Closed – Easter Break |
| Wednesday 22nd April 2026 | Fabulous Flamingos Class Assembly & Cake Sale 9:15am |
| Wednesday 29th April 2026 | Marvellous Minibeasts Class Assembly & Cake Sale 9:15am |
| Friday 1st May 2026 | Academy Photos – Class Photos & Y6 Leavers |
| Wednesday 6th May 2026 | Whole School Water Safety Assembly 1pm |
| Thursday 7th May 2026 | Perfect Penguins Rivers Workshop 1pm |
| Monday 11th May 2026 | SATS |
| Monday 25th May 2026 – Friday 29th May 2026 | School Closed – Half Term |
| Monday 1st June 2026 | INSET DAY |
| Tuesday 2nd June 2026 – Friday 5th June 2026 | KS2 Residential – St Briavels Castle |
| Wednesday 17th June 2026 | Sports Day – Betley CC 1:15pm |
| Thursday 18th June 2026 | Father's Day Crafts |
| Thursday 2rd July 2026 | Celebration Carnival 2pm |
| Friday 3rd July 2026 | Summer Fayre |
| Wednesday 8th July 2026 | KS2 Leavers Performance 1:30pm & 5:30pm |
| Thursday 9th July 2026 | Prom & Disco 6pm – 8pm |
| Friday 10th July 2026 | School Reports to Parents |
| Friday 17th July 2026 | Leavers Assembly – St Margaret's Church 9:15am |
| Monday 20th July 2026 | INSET DAY |
| Tuesday 21st July 2026 | School Closed – Summer Break |